

The Balladeer

Monthly Newsletter of
ACOUSTIC ROUTES
Wellington Folk Centre
Inc.
www.acousticroutes.org.nz

February 2009

Acoustic Routes Concert at the Ruby Lounge 7.30 pm Sunday 14th February.

Emily Smith and Jamie McClellan

General Admission \$20 Members \$10 (inaugural 50% discount offer)

'Scots Singer of the Year 2008/9' Emily Smith has firmly established herself as a leading light in the Scottish folk scene. Since winning the 2002 'BBC Young Traditional Musician of the Year Award' she has released four critically acclaimed albums, toured extensively with her band on the international folk circuit and is recognised not only as one of Scotland's finest interpreters of traditional song but also as a talented songwriter and multi-instrumentalist. Emily and her New Zealand partner Jamie McLennan will be treating us to a night of songs to remember this Valentine's Day. Local musicians of the highest calibre will open for Emily in Wellington's finest new music venue, come early for a bite to eat and enjoy the ambience. Further information about this and other Acoustic Routes folk music events at www.acousticroutes.org.nz and www.emilysmith.org

"As far as I'm concerned she can walk on water"
Mike Harding, Radio 2 "Emily Smith could become to Scottish folk what Joni Mitchell is to its Californian cousin"

Emily spent six years living in Glasgow during which time she gained an Honours degree in Scottish Music from The Royal Scottish Academy of Music and Drama.

Now living back in her home area of Dumfries Smith has found her niche drawing on the rich local history and landscape as the source and inspiration for her music. She has an affection for collecting dusty old poetry and song books in search of new material. The results are re-worked ballads which seamlessly interweave with Smith's own descriptive songs, often confusing the listener as to which material is old and which is new.

Emily became the first ever Scottish winner of the USA Songwriting Competition in 2005 after winning the folk section with her song 'Edward of Morton', another of her songs 'Always a Smile,' about the life of her Polish grandmother, was short listed in the final ten.

Frequently performing in the same line up as her musical heroes, Smith's star is definitely in the ascendant. She will be performing with Jamie McClellan, fiddler extraordinaire who is featured in their latest CD Adoon Winding Nith. Rumour has it there may be a surprise appearance of one of our favourite Irish lads from NZ, and we will be delighted by some floorspots from local performers afore hand. Come and have a social catch up over a pie and pint before hand... actually pies may not be quite on the menu but you know what I mean.....



ACOUSTIC ROUTES - WELLINGTON CITY FOLK CLUB

VENUE - Ruby Lounge
Katipo Cafe

MAIL- PO Box 27-191 Marion
Square Wellington, New Zealand
www.acousticroutes.org.nz
president@acousticroutes.org.nz

ACOUSTIC ROUTES - (Wellington
Folk Centre) is a club for people who
enjoy performing and listening to
music with the emphasis on folk and
acoustic styles.

MONTHLY EVENTS

Concerts are held on the **fourth
Sunday** of month at 7.30 pm (See
page 4) are normally held on the
fourth Sunday of each month at the
Ruby Lounge, Bond Street. Club nights
are held on the second Wednesday of
each month at the Katipo Café, upstairs
at 76 Willis Street.

.Club Committee 2009-10

President Mary Livingston 476 6033
president@acousticroutes.org.nz

Secretary: Mike Maguire

Treasurer: Peter Denee 499 2880

Committee:

Jill Brasell 972 3298

Col Wright 478 6775

Kevin Ikin

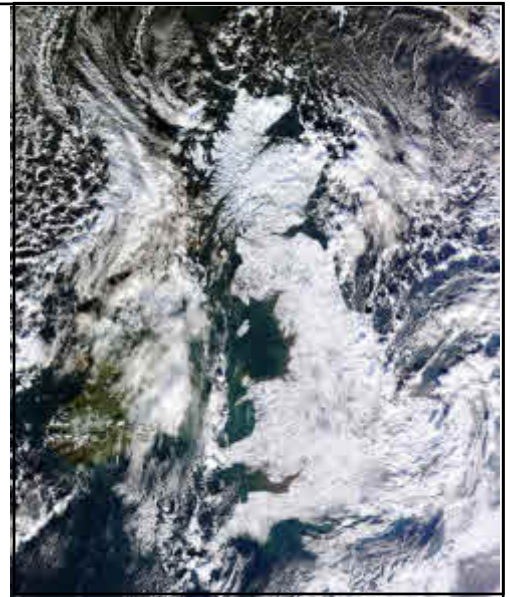
Mike Maguire

Balladeer

Jill Brassell jilldon@

President's Note Hi Everyone
and Happy New Year! Christmas
seems to pass so quickly but we did
have a great party to finish up the
year and splendid weather for a cou-
ple of days I believe. At least it
wasn't minus 14! I hope you've all
seen this amazing NASA image of
the UK completely white. I could see
Pat Higgins building an igloo in Ire-
land it was that crisp.

And so to the New Year and all it
brings. Lots of music and a lovely
turn out at the Katipo for our first
feel of the venue. It seems that there
are some house rules which I need
to get my head around but other
than that, a fab night with some fab
music (accompanied by some very
reasonably priced bar options).
Phew! I was anxious about it but
now I'm encouraged that we are on
the right track for our musical ad-
ventures. The next session at Katipo
is already in the headlights for Feb,
smartly followed by Emily Smith
and Jamie McClellan weaving their
magic on Valentine's Day at the Ru-
by Lounge. We have given you all a
great discount (50%) for the gig and



Ruby's has broadened the menu with
more choice at the snack end for
those who are saving for a rainy day.
Then, we also have Danny Spooner
at Katipo on the 21st of Feb. I can't
wait for all these cool things. But be-
fore that... see y'all at Annie
McGregors Waitangi Day Party
which she assures me is an Acoustic
Routes phenomenon and open to ev-
eryone. Mary Livingston



Danny Spooner at Katipo Café

7.00 pm Sunday 21st Feb. Workshop followed by Concert.

General Admission \$15, Members \$10.

Ca-

fé open 5 - 9 for meals and beverages.

Danny Spooner loves to sing about working people. His passion is the expression of British and Australian culture through folk music. Born into a working-class family in the East End of London He left school at 13 and worked on a sailing barge before becoming a Freeman of the Thames. Over the next 10 years he held various jobs including salvage tug and trawler skipper. This varied, almost nomadic life, has given Danny an all-too-rare real-life education in the ways of working people.

When Danny arrived in Australia in 1962, he realised that there was an audience ready, interested, and willing to appreciate these sorts of songs. He heard Declan Affley singing in the early folk scene in Sydney, and at the fabled Frank Traynors in Melbourne Martyn Wyndham-Read, Brian Mooney, David Lumsden, Trevor Lucas and Margret RoadK-night. This was the engine room of the folk revival in Australia, and made Danny want to learn those songs. Thanks to a prodigious memory and a willingness to learn about his craft, he quickly developed into one of the best singers of British folksongs in Australia. His repertoire spans most of the British tradition and a respectable portion of the Australian folk heritage.

Danny has performed in folk clubs all over Australia, New Zealand and Britain. He's appeared at every major folk festival in Australia, and given a vast range of workshops. Nothing gives him more pleasure at a festival than getting a good singing session going, "That's what folk music is about". Long described as "a living national treasure", Danny Spooner can make traditional music seem new and make new songs seem old. Danny loves to share his craft- (the workshop format will be revealed by the master himself) **DON'T MISS IT!**

Acoustic Routes Club Member Profile

Sue Ikin

I'm a child of the 60's, that is I was young enough to remember the 60's when they happened and the first "folk" influences were Peter Paul & Mary etc. Rosa Shiels and I were in the same class at Riccarton and together with a couple of guys we messed around with singing some of that sort of material. Our music teacher did not approve. Rosa and I paid a few visits to the folk club in Christchurch that last year of school (1968) and I remember concerts by The Band of Hope Jug Band and The Hamilton County Bluegrass Band. Other influencers were more rock I guess, The Rolling Stones, Cream, The Animals etc.

Fast forward to 1983, at least I think it was 1983, and Kevin, Megan and I spent Easter weekend up in Alexandra with my cousin and her husband who just happened to work in the same business as Mike Moroney. Mike and "Dette" were staying over at the same time and we spent hours listening to all the Irish stuff that my cousins had just brought home from their travels. By May we'd joined the New Edinburgh Folk Club, October saw our first, and as it turned out, only Cardrona, and New Year brought Whare Flat. As a direct result of that festival Kevin was invited to join The Pioneer Pog 'n' Scroggin Bush Band. We were both elected on the NEFC committee and I assisted Sue Harkness with Whare Flat for two years as chief cook. Meanwhile Megan and I both took up Irish Step Dancing



Moving to Wellington in 1986 was easy as we had a ready-made community to step in to. We all regularly attended concerts and sing-rounds at Holland Street up to 1991 and subsequently at the two WCC venues; Under the Rotunda and The Back Room. I was first elected on to the committee in 1988 and have held the roles of secretary and treasurer for a significant number of years since then. My memory for folk festivals is a little more hazy but I think there's only been two or three years since 1988 that I haven't been on the organising committee.

Musically my interests are firmly rooted in the Celtic tradition and I still dance, although these days it's more RSCDS. A littler easier on aging legs. As I can't play a note admin. has been a great way of serving the music that's been such a huge part of most of my adult life.

Slan go foill

Sue Ikin

Come All Ye Session at Katipo Cafe 7.30 Wednesday 10th Feb. Koha entry

Come and 'warble yer wattles' at chez Katipo at our informal get together this month.

The first hour and a bit will be a blackboard-one item each for now - followed by a session for as long as you can take it, or so the landlord tells me! If there's lots of us, this will be a jam... please feel free to bring copies of words / chords if you want to lead a song and let the compere know if you are shy about getting your chance. The songbooks will also be available if you can't think of one. If there's a smaller group it will more likely be a singaround. ALL STYLES WELCOME!! Food available until 9 pm. Drinks at Happy Hour prices. After 9 pm hot chips, toasted sammies and beverages will available until we finish.

And BLISS ... no chairs to pack up YAY!!!

Laftahfest 2009/2010 ...And a wonderful time was had by all. Once again Laftahfest provided a joyous entry to the new year. Following the usual tradition we had shared meals, barbeques, the posh afternoon tea, blackboard concerts every evening with encouragement for everyone, and an amazing New Years Eve celebration. Annie and helpers produced a wonderful spread, and Roy and helpers created a spectacular stage set. The theme was "Pirates, Parrots, Molls and Mermaids" and everyone joined in the fun. The music also followed the theme, and we had a lot of watery songs -from shanties to rock. One of the highlights for me was the posh afternoon tea, everyone dressed to the nines (or flashily funny), a bright, sunny afternoon, and wonderful music from a scratch band led by Don, Jill and Alfred playing a mix of jazz, blues, rock. There was a bit of rain during the festival, but this made us appreciate being able to get under cover and keep right on partying. When the sun shone we were out there enjoying it. Many thanks to Annie, Roy, Peter, Philippa, Murray and Julie for a wonderful week.

Ruth Birnie

Wellington Region Folk Club Events February

Thursday 4th February
Pukerua Bay Folk Club
Tuesday 11th February
Mainly Acoustic
Kapiti Live Music Club
Wednesday 10th February
Acoustic Routes -
'Come All Ye' Katipo Cafe
Friday 12th February
Wairarapa Folk Club
Levin Folk Club
Ceol Alba
Sunday 14th February
Acoustic Routes Monthly
Concert Emily Smith
Friday 19th February
Mojo Acoustic
Wellington Bluegrass Soc.
Sunday 21st February
Acoustic Routes Danny
Spooner at Katipo Cafe
Tuesday 25nd February
Kapiti Live Music Club Concert
Friday 28th February
Levin Folk Club
Ceol Alba

A man left his banjo on the back seat of his car and when he came back he saw that the back window had been smashed as someone broke and left another banjo!

CALENDAR ADJUSTMENT : Forbid-
den Joe have cancelled their gig with us in
April... Celia Briar and Paddy Burgins
Wooden Box Band will be brought for-
ward from June to play in April instead.

The Balladeer

This newsletter is produced once a month for Acoustic Routes members. Details for club listings must be received by the 15th of the month for the following month's issue.
 Email to Jill Brasell

Folk Clubs and Contacts

Acoustic Routes - Wellington Folk Club

AR concerts are normally held on the fourth Sunday of each month at the Ruby Lounge, Bond Street. These feature an invited guest performer, with supporting acts. Door charges vary – member discounts apply. Bar, bar snacks and full meals available.

Club nights are held on the second Wednesday of each month at the Katipo Café, upstairs at 76 Willis Street. These begin with a blackboard concert, where anyone can perform one item, followed by an informal jam session or singaround. Entrance by koha. Café meals available till 9, bar and snacks available all night.

Contact : 476 6033 Mary Livingston

Mainly Acoustic Music Club 2nd Tuesday of month, 7.30, Mayfair Cafe, 166 Main Street, Upper Hutt. Con: Kevin or Sue Meehan, 970 4068

Pukerua Bay Folk Club 1st Thursday of month, 8pm, 9 Donlin Rd, Pukerua Bay. Cony: Murray or Julie Kilpatrick, 239 9951; : julmur@paradise.net.nz

Wellington Bluegrass Society 3rd Friday of month. 8.30 pm, 54 Richmond St, Petone. Cont: Andrew Bicknell, 4770069 bluegrass@paradise.net.nz,

Kapiti Live Music Club Contact Susie Colien-Reid 06 3643363

Levin Folk Club 2nd Friday of month, Horowhenua Scottish hall, corner Bartholomew Rd. Blackboard concert plus guest artist Workshop 4th Friday of month Contact: Anne Campbell (06) 368-3777

Wairarapa Folk Club 2nd Friday of the month; Contact Remco de Ket or Jenny Freemantle, (06) 370 1021 - wairarapafolkclub@paradise.net.nz

Ceol Alba – Scottish Music Club 2nd and 4th Friday s of the month. Phone Lynne Scott, 565 0164: lynne@scott.gen.nz

Other Musical Events:

Mojo Acoustic Mojo Cafe, Upper Willis Street. Contact Ruth Birnie on ruth.birnie@xtra.co.nz or phone 565 3432.

Otaki Live Music Club 1st Sun of month Cavan Hughes chaines@pocd.co.nz

Acoustic Welsh Dragon last Thursdays 8pm Roy McGuinness and Niels Gedge

Mojo Winter Jam Session 2nd Sundays 3 - 6 pm Richard Klein

alistair's music Ltd

Alistair & Catriona Cuthill

215 Cuba Street

PO Box 9527

Wellington, NZ

Ph (04) 917 4487

Cell (021) VIOLIN